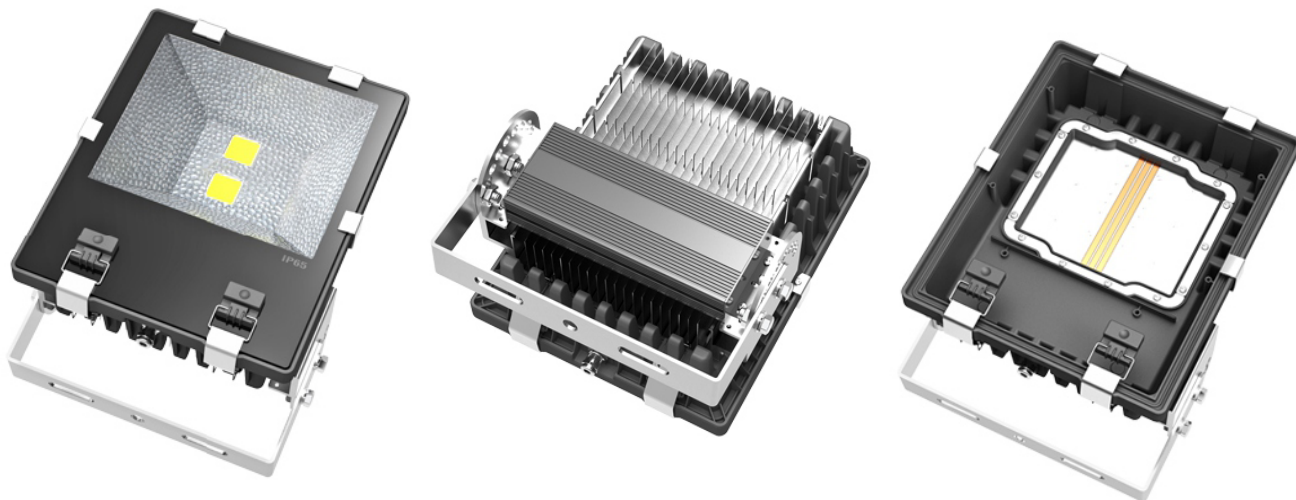


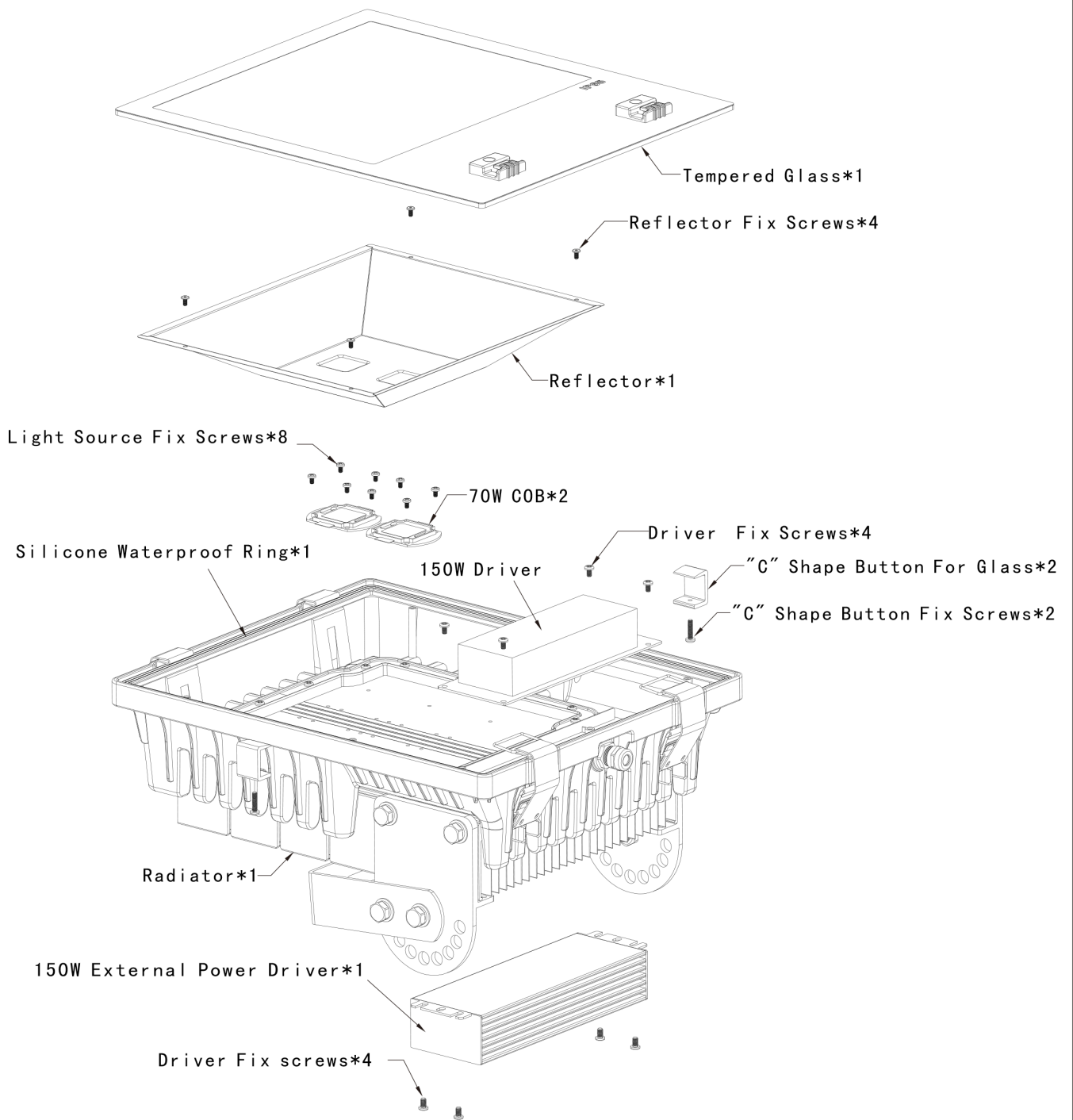
AR-FL-Slim-150W White



TECHNOLOGY/PARAMETER

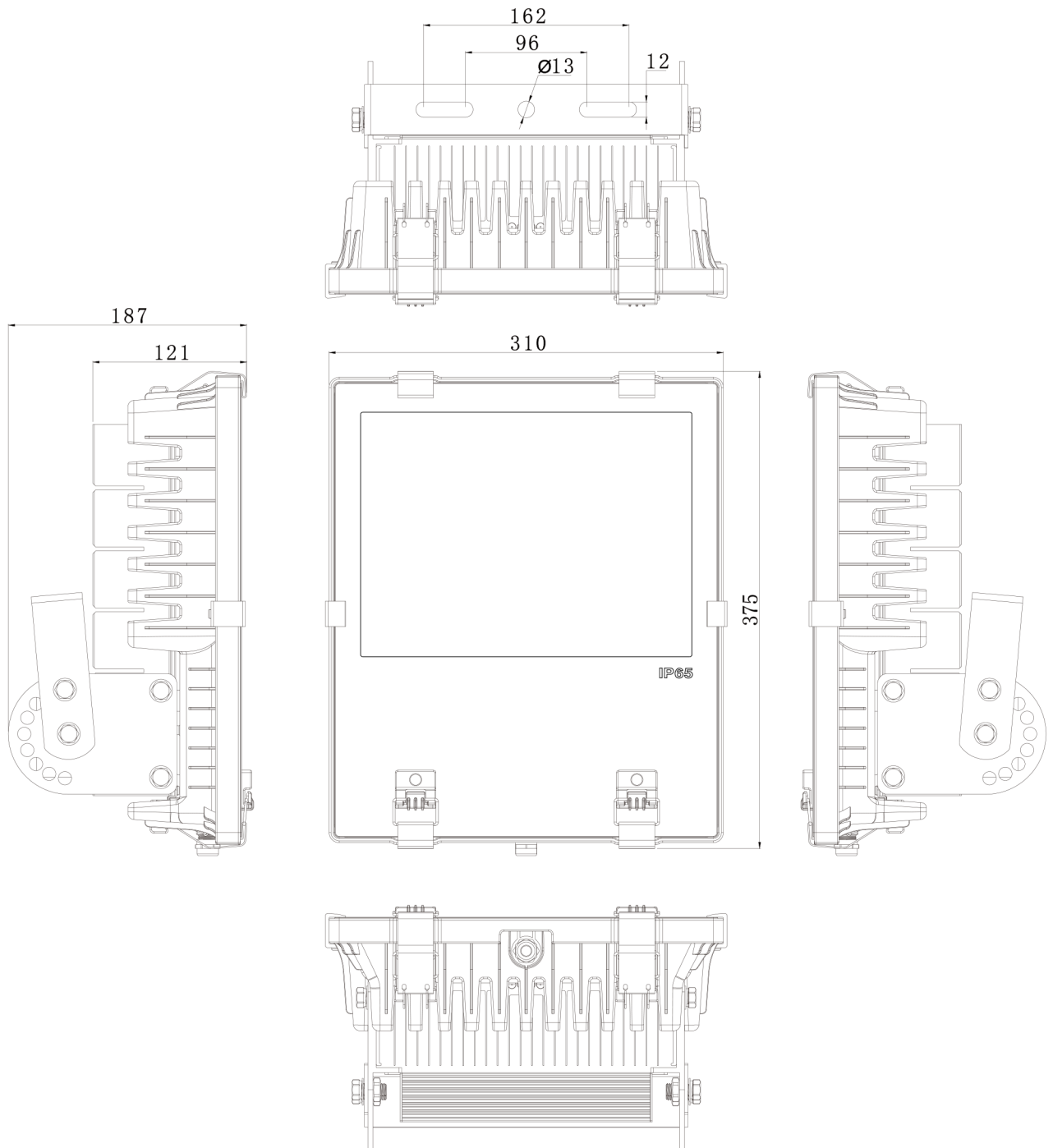
Model:	AR-FL-Slim-100W White	Type:	Outdoor Lighting
Application:	Plaza,Gymnasium,Golf Course	Std&AUT:	CE, ROHS
Type	Item	Light Source Parameter	
Basic Parameter	LED Type and Qty	Voltage/Current	4.5-4.7A, 33V
		Quantity	2Pcs COB
	Input Voltage	100V-240VAC/277VAC	
	Main Material	Aluminum	
	Appearance	Cover:Gray / Radiator:Silver	
Electric Parameter	Color Temperature	5500-6500K	
	Total Power	150W	
	Total flux(LM)	12000-12750LM	
	CRI	75-85	
	Other	"Meanwell" External Driver	
	Beam Angle	120°	
	Efficacy(Lm/W)	75-85LM/W	
	Package	High intensity Kraft paper / corrugated paper for outer packing	
	Operating Environment	Temperature: -20°C ~ +40°C Humidity: 20%-90%	
	Life	50000 Hours	

SPLIT GRAPH (Unit: mm)

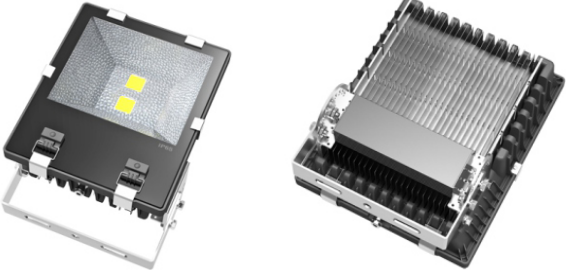



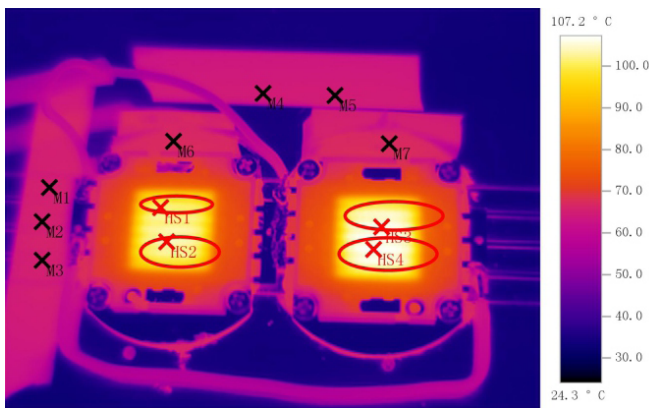
PRODUCT DRAWING (Unit: mm)

Weight: 9Kg ± 5%

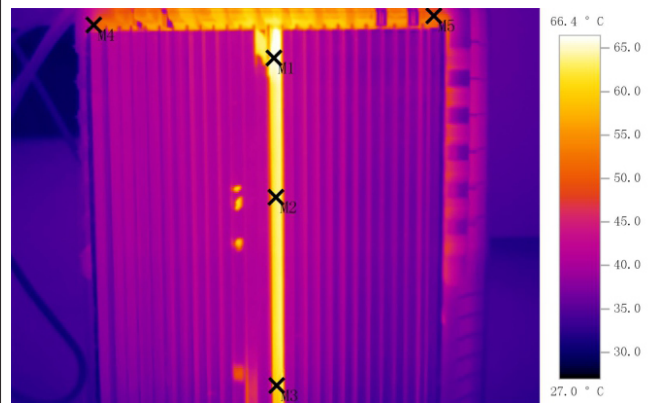


HEAT RADIATION TESTING REPORT

Test Mode: Baked-in Test	Output Power: 150 W
Test Instruments : • TESEO 881 - Infrared Thermography	Input Voltage: 100-240VAC / 277VAC
Test Time: After 4 hours' work	Light Source 2Pcs COB
	Ambient Temperature 29.5°C
	Test Instrument 



Picture 1

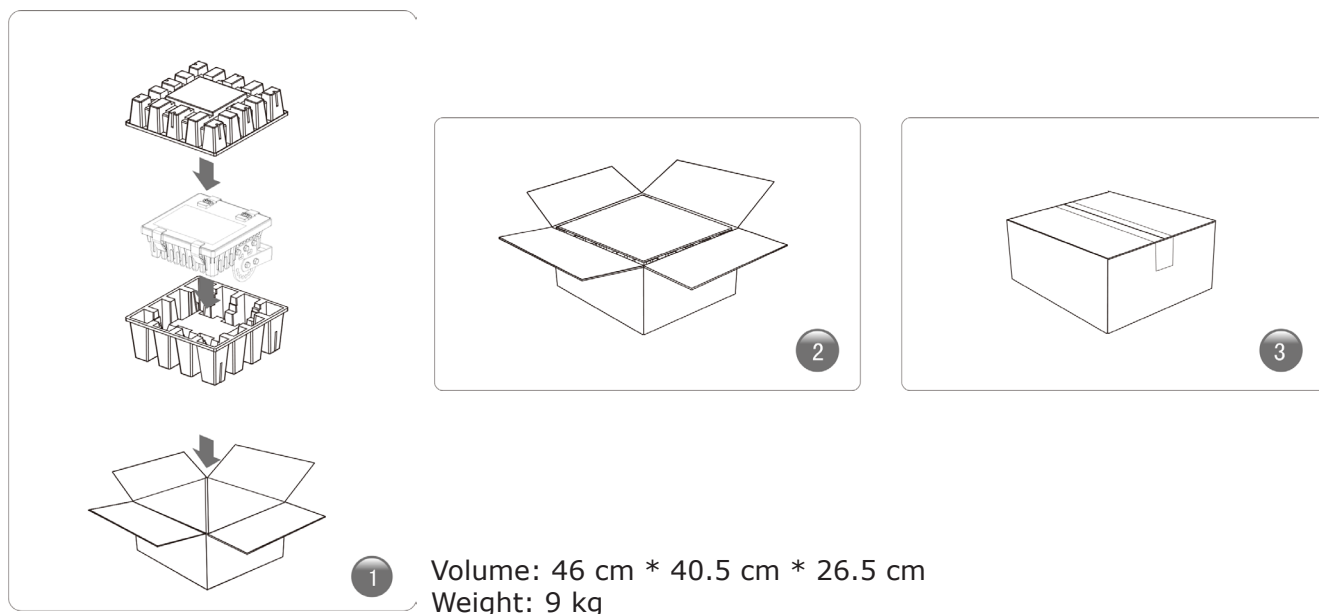


Picture 1

Picture 1			Picture 1		
Test Position		Temperature, °C	Test Position		Temperature, °C
M1	Heat Pipe	65.7	M1	Radiator Bottom M1	65.8
M2	Heat Pipe	65.6	M2	Radiator Bottom M2	63.1
M3	Heat Pipe	65.3	M3	Radiator Bottom M3	60.4
M4	Radiator Bottom	64.4	M4	Plastic Cover M4	48.8
M5	Radiator Bottom	64.7	M5	Plastic Cover M5	50.9
M6	Negative Electrode	67.5			
M7	Negative Electrode	67.0			
HS1	COB Surface	95.0			
HS2	COB Surface	90.4			
HS3	COB Surface	91.7			
HS4	COB Surface	89.2			

PACKAGE

- **Small Box Package**



- **Small Box Package**

Quantity: 1 x 2 Layer = 2 pcs/Carton

Weight: 9 kg

Volume: 48.5 cm x 43 cm x 60 cm \approx 0.13 m³

