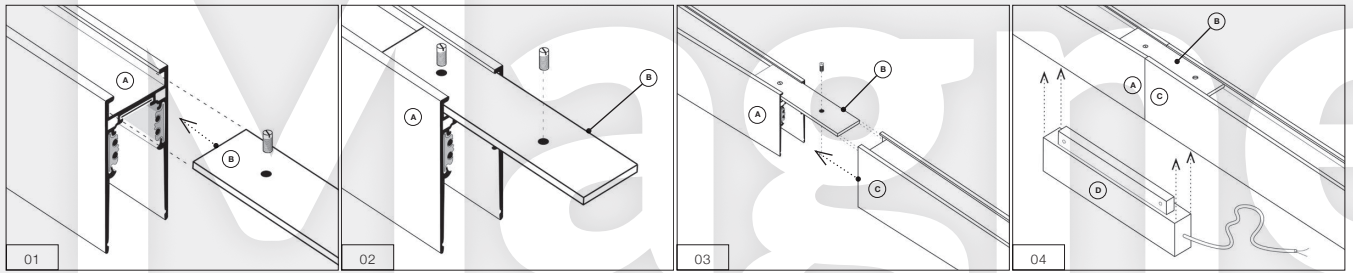


TRACK MAGNETIC

Example of the connection between track

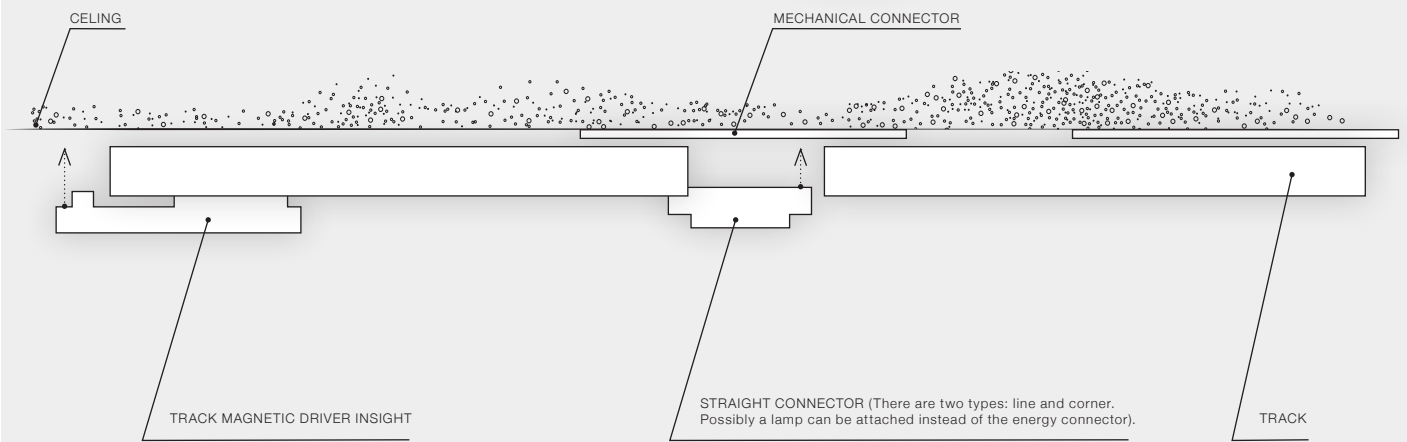


01 Insert the MECHANICAL CONNECTOR (B) into the TRACK (A).

02 Tighten the screw between A and B.

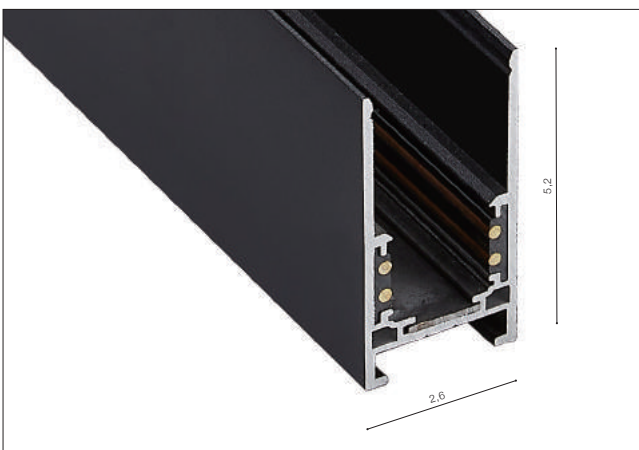
03 Slide and fasten TRACK (C) to the MECHANICAL CONNECTOR (B).

04 Put STRAIGHT CONNECTOR ELECTRIC (D) between the two connected tracks (A+C).



Track Magnetic 27 (1m, 1,5m, 2m, 3m) WITH END CAP 2X (ALL INCLUDED)

- TRACK 27 1m (BLACK) **AZ4713**
- TRACK 27 1m (WHITE) **AZ4712**
- TRACK 27 1,5m (BLACK) **AZ4715**
- TRACK 27 1,5m (WHITE) **AZ4714**
- TRACK 27 2m (BLACK) **AZ4717**
- TRACK 27 2m (WHITE) **AZ4716**
- TRACK 27 3m (BLACK) **AZ4719**
- TRACK 27 3m (WHITE) **AZ4718**



Track Magnetic 52 (1m, 1,5m, 2m, 3m) WITH END CAP 2X (ALL INCLUDED)

- TRACK 52 1m (BLACK) **AZ4638**
- TRACK 52 1m (WHITE) **AZ4639**
- TRACK 52 1,5m (BLACK) **AZ4640**
- TRACK 52 1,5m (WHITE) **AZ4641**
- TRACK 52 2m (BLACK) **AZ4642**
- TRACK 52 2m (WHITE) **AZ4643**
- TRACK 52 3m (BLACK) **AZ4644**
- TRACK 52 3m (WHITE) **AZ4645**

* - EXPLANATION SHORTCUT PAGE 2 (E)