

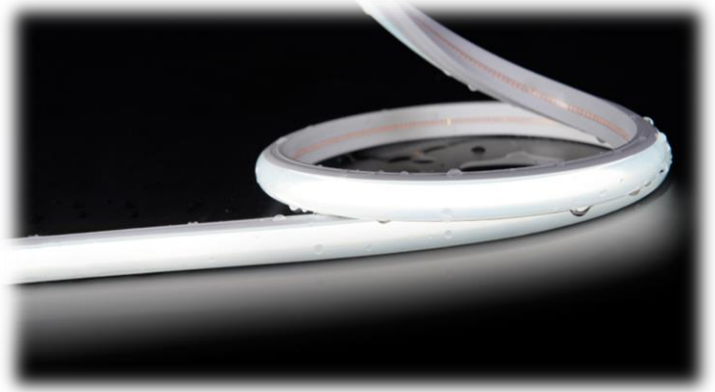
Specification

DF10-24V-EL



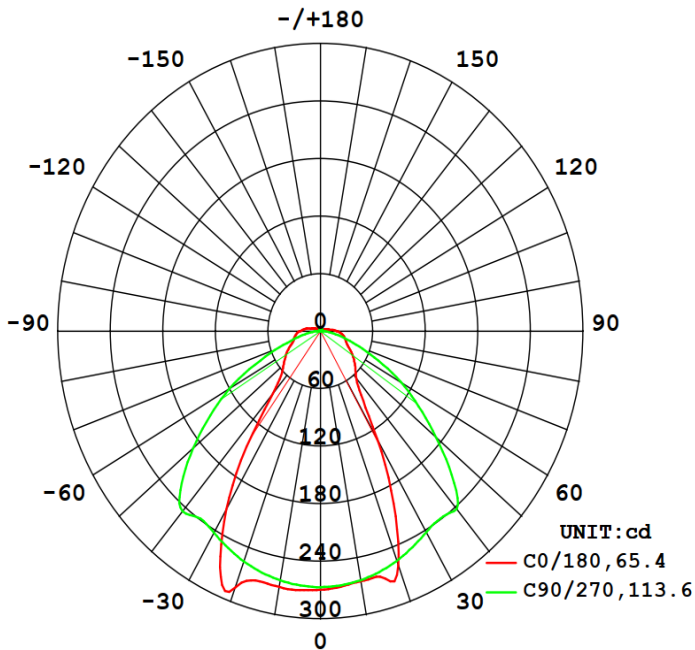
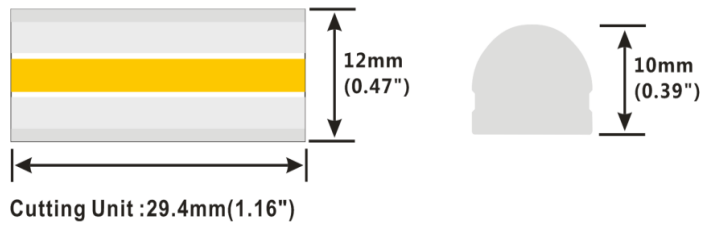
▼ General description

- linear grating strip, 60° and 90° optional
- CRI>90,80LM/W,800LM/m
- Easy installation and maintaining
- 2300K\3200K\5000K\R\G\B optional



▼ Dimension

- Max.length: 5000mm
- Cutting unit: 29.4mm
- Min. bend diameter: Φ60mm
- Mounting: PVC clips
- IP: IP65
- Warranty: 3years

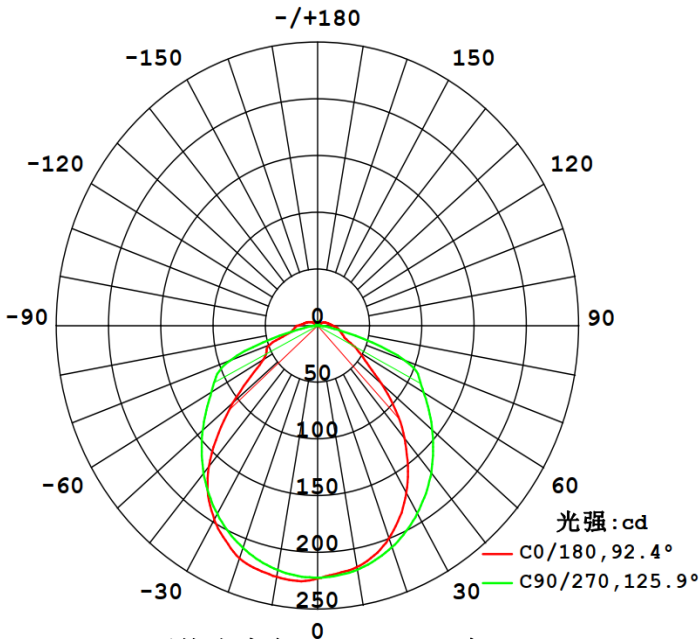


Photometric(EL6)

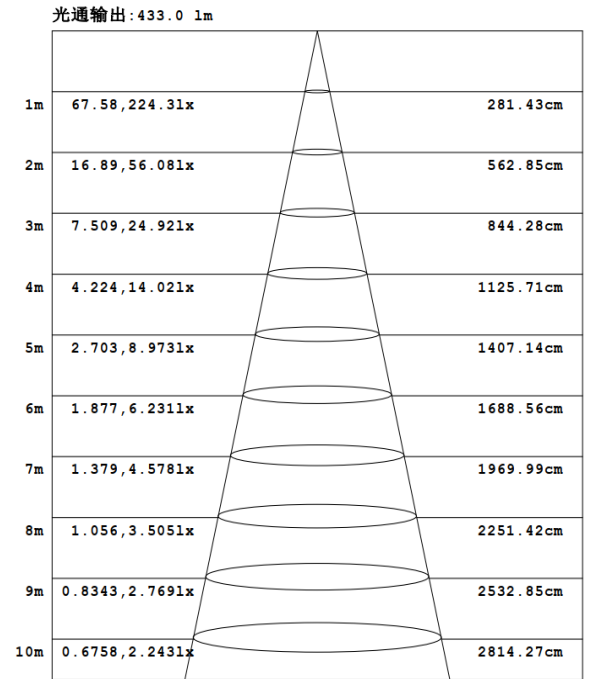
Flux out:373.2 lm

1m	118.8,269.8lx	198.26cm
2m	29.70,67.46lx	396.52cm
3m	13.20,29.98lx	594.79cm
4m	7.425,16.87lx	793.05cm
5m	4.752,10.79lx	991.31cm
6m	3.300,7.49lx	1189.57cm
7m	2.424,5.50lx	1387.84cm
8m	1.856,4.21lx	1586.10cm
9m	1.467,3.33lx	1784.36cm
10m	1.188,2.69lx	1982.62cm

AAI Figure(EL6)



Photometric(EL9)



AAI Figure(EL9)

※Max.length data is based on 10% voltage drop

※Warranty is based on indoor use

▼ Electronic & output data

Input voltage: DC24V

Typical Power: 10W(1m) /43.2W(5m)

Max.power: 11.2W

Power range: 8.8~11.2W

Viewing angle: 60° or 90°

Rated current: 0.42A(1m) /1.8A(5m)

CRI: 90


On-off times: 10000 (test times)

Copper foil: 2oz


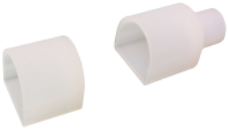

CRI	Color	CCT\WD	Lumen(lm)	lm/W	Energy efficiency class
Ra>90	LW	2300K	600	60	A+
Ra>90	WW	3200K	680	68	A+
Ra>90	DW	5000K	750	75	A+
-	R	620-630nm	-	-	-
-	G	520-530nm	-	-	-
-	B	450-460nm	-	-	-

- 1.The tolerance of output data can be vary up to 15%
- 2.the output data tested according to IES TM-30-15
- 3.the output data is based on IP20/1mterter, data of 5m in only for reference
- 4.IP protection process leads changes to size, CCT and luminous flux

▼IP Process

IP Process	Picture	description	Size	optional CCT/color for finished product	lumen output rate
EL		Extrusion tube	12mm*10mm	2300K, 3200K 5000K, R, G, B	70%

▼Accessories Information

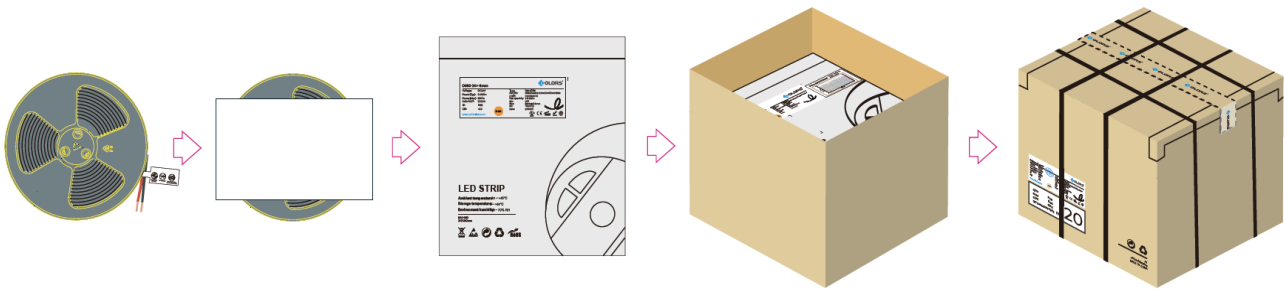
Name	Picture	Code	description
PVC Clip		94-02-00-0025	Transparent PVC mounting groove,suitable for 8mm FPC,silicone extruded EL strip
Silicone end cap		94-02-00-0029	Silicone end cap set,including end cap and plug, suitable for 8mm COF ,EL silicone extrusion strip
Stopper glue		94-16-03010001	Silicone gel, suitable for ST/ET/EH/EF/SF waterproof LED strip

▼Order Code Formats

1: Category		2: LED		3: LM/m@NO		4: Voltage		5:FPC Width		6: IP Process		7: CRI		8: CCT	
D	-	F	COF	10	1000LM/M@NO	24	24V	08	8mm	EL6	60°Extrusion Lens	9	> 90	LW	2300K
										EL9	90°Extrusion Lens	0	0	WW	3200K
														DW	5000K
														R	620-630nm
														G	520-530nm
														B	450-460nm
D	-	F		10		24		08		EL6		9		LW	
9: Silk Printing		10: Entry cable		11: Wire type		12: Wire length		13: Tape type		14: Label Type		15: Strip Length			
N	Neutral	S	Single	N	PVC wire	050	50cm	X	Nothing	C	COLORS	0500	5m		
										S	Customized				
N		S		N		050		X		C		0500			

DF102408EL6-9LWNSN050XC0500

▼ Packing



IP Process	Product size(mm)	Product quantity (m/reel)	Product quantity (m/case)	Product net weight(kg)	Net weight per box (kg)	Gross weight (kg)	Package size (mm)
EL	5000*12*10	5	40	0.85	6.8	7.8	410*410*260

Remark: data with 10% tolerance

▼ Precautions

- ※ Please drive the led strip with 24VDC isolated power, and the ripple of the constant voltage source should be less than 5%.
- ※ Please do not bend the strip into an arc with a diameter less than 60mm to ensure the longevity and reliability. DO NOT twist the strip
- ※ Do not fold it in case any damage of LED beads.
- ※ Do not pull the power wire hard to ensure the longevity. Any Crash may damage the LED light is prohibited.
- ※ Please make sure the wire is connected to the anode and cathode correctly. The power output should be consistent with the voltage of the strip to avoid damage.
- ※ LED lights should be stored in dry, sealed environment. Please only unpack it before usage. Ambient temperature: -25°C~40°C. Storage temperature: 0°C~60°C. Please use the strips without waterproof within indoor environment with humidity less than 70%.
- ※ Please be careful during operation. Do not touch the AC power supply in case of electric shock.
- ※ Please leave at least 20% power for the power supply during using to ensure there is enough power supply to drive the product.
- ※ Do not use any acid or alkaline adhesives to fix the product (e.g.: glass cement).